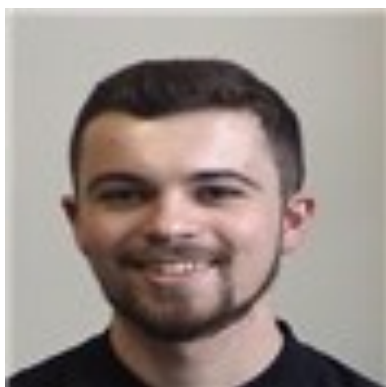


## Epping and Thornwood Spring 2021



*Above: PC Sloman*

### Introduction to your local officer

PC Sloman is the Epping Forest District Community Policing Team officer for the Epping Hemnall and Epping Lindsey and Thornwood Common wards. These also include Coopersale Village and Fiddlers Hamlet. PC Sloman has been an officer for over 2 years, spending the majority of his career so far on the Local Policing Team. He moved to the Community Policing Team in December 2020. Since joining the team, PC Sloman has been actively patrolling his beat areas, addressing local concerns also with the assistance of partner agencies, and carrying out enquiries for various crimes allocated to him which have occurred in these areas. These include low and medium risk hate crimes. Within the Community Policing Team, PC Sloman is also supported by a team of Police Community Support Officers you will often see active in these areas.

### Introduction from the District Commander, Ant Alcock

“Hi everybody. My name is Ant Alcock and I’m a Chief Inspector with Essex Police, currently the District Commander for Epping Forest and Brentwood where I hold responsibility for policing. I wanted to take the time in this edition to explain the policing structure within Epping Forest. Based at Loughton Police Station, there is the Local Policing Team (LPT), Community Policing Team (CPT), Town Centre Teams (TCT) and the Criminal Investigations Department (CID). LPT provide the 24/7 cover responding to emergency and non-emergency incidents. They also contribute to investigative and proactive policing. 2 shifts of CPT officers now provide 7 day a week cover. They have a number of functions to include providing high visibility proactive patrols, problem solving in partnership, community engagement and investigating certain crimes. 2 Children and Young Persons’ Officers, a dedicated Rural Officer and a Community Safety Engagement Officer are also attached to the CPT. The district also benefits from an Epping Forest District Council funded Community Safety Team, 1 Sergeant and 2 Police Constables working to address local priorities. Waltham Abbey and Loughton benefit from Town Centre Teams, 2 additional officers per area. The CID are responsible for serious and complex investigations up to, and including, attempted murder. Whilst that covers everyone dedicated to the district, there are of course a number of shared resources across the West of Essex and force-wide Epping Forest benefits from. This includes but is certainly not limited to: Operation Raptor (dedicated to addressing county lines and gangs), the Roads Policing Unit, the Dog Section, the Operational Support Group, the Domestic Abuse Investigation Team and the Child Abuse Investigation Team. I would really encourage you to share your concerns with us, so that we can continue to keep Epping Forest a safe district to be.”



## Some recent local policing updates

We are aware of concerns in relation to dogs being stolen, however it has become apparent that conversations being had may not reflect current recorded crimes. At the beginning of February, officers stopped a van in Loughton linked to reports of suspicious behaviour across the district. After speaking with the driver and searching the van, officers were content there was no cause for concern and no criminal offence had been committed. Please keep reporting to help us respond. Essex Police has a Dog Watch scheme encouraging dog owners and walkers to be extra eyes and ears within the community. For more information and/or to join, please email: [essex.watch.liaison.officers@essex.police.uk](mailto:essex.watch.liaison.officers@essex.police.uk).

The Community Policing Team have been paying attention to Hemnall Street in light of reports of anti-social behaviour, in particular around Pelly Court. The team have been in contact with Epping Forest District Council regarding the issue, and based on reports, issues seem to have reduced of late.

Below are 2 examples from late January demonstrating outcomes of reporting suspicious activity:

- Report of number plates being changed on a vehicle in Epping received. 2 males were arrested after the vehicle was found decamped in Loughton around 20 minutes later. They were arrested on suspicion of theft, alleged to have stolen tools from a van in Hertfordshire earlier in the day.
- Report of suspicious activity involving 2 people in a vehicle in the Epping area received. The vehicle soon after left the scene, but the Community Safety Team later located it in Ongar. A teenage boy was arrested on suspicion of theft of a motor vehicle, 2 offences of possession of an offensive weapon, possession of cannabis and possession of an imitation firearm. This investigation is ongoing.

The Roads Policing Unit conducted a speed check in Thornwood on 25th February. A van driver was dealt with for travelling at 53mph in a 30mph limit.

Catalytic converter thefts are being experienced across the District. Any 'live' theft incident will be attended on an emergency response, and enquiries made with all reports to identify suspect vehicles for stop and searches. It is likely suspects are offending across borders, with information sharing across districts and forces ongoing. The Roads Policing Unit have been responsible for at least 3 arrests since 30 November on suspicion of catalytic converter theft, based on stops at the M11 J7 Hastingwood Roundabout and on the A13.



Essex Police continues to respond to acquisitive and transient criminality, such as theft of motor vehicle offences. Lines of investigative enquiry are explored with all reports in an attempt to identify a suspect. This includes using Automatic Number Plate Recognition technology to identify directions of travel for stolen vehicles and suggest any suspect vehicles. It is not uncommon for registration plates to be changed on victim or suspect vehicles; any information such as plate deposition sites or individuals being seen to change plates is encouraged to be reported. Information sharing is ongoing with neighbouring forces, and there are regular joint operations in west Essex and locally. Some vehicles are often very quickly taken to 'chop shop' locations and dismantled for the onward sale of parts. We continue to gather intelligence regarding any possible sites, so please do report any suspicious activity you may witness. Any stolen vehicles located by Essex Police, often thanks to reports from members of the public, are forensically recovered in the hope that this may locate a suspect. The force's Stolen Vehicle Examiner brings specialist knowledge and is frequently recovering vehicles using false identities. You can follow him on Twitter: [@essex\\_sviu](https://twitter.com/essex_sviu)





For more crime prevention advice, visit [www.essex.police.uk/crimeprevention](http://www.essex.police.uk/crimeprevention)

## Crime Prevention—Theft from a Motor Vehicle

Theft from motor vehicle offences have decreased by 33.5% across Epping Forest in the 12 months to January 2021. There has been a slight recent increase in these offences for Epping and Thornwood: 22 recorded between 01/11/20 to 01/02/21, compared to 16 for the same period 2019/20. 11 of the 22 offences related to catalytic converter theft. To prevent this type of theft, consider your parking carefully; don't park half on the kerb allowing easy access to the underneath of the vehicle, use a garage where possible or otherwise park in a well lit, populated area. Protective locks or guards are available, and you can also get your catalytic converter marked. Report any suspicious activity.

## Reporting Guidance

Timely reporting using the correct means is really important for a number of reasons. For example, it ensures we have an accurate understanding of crime and ASB occurring within the local area, helping to focus responses. We often become aware of things discussed elsewhere, such as on social media, that have not been officially reported. You might also have the final bit of information required to make the difference between the court granting a warrant to search a premises and not.

Do it online with the digital 101 service: Significant developments have been made to increase online reporting options for non-urgent incidents, to ease demand on the 101 telephone line. Anybody who is able to report online is encouraged to do so, so those who cannot can reach a call handler quicker. Please visit [www.essex.police.uk/](http://www.essex.police.uk/) to explore reporting options, which includes crime and anti-social behaviour reporting, road traffic incident reporting, breach of COVID regulations reporting and more. Why not try our 'Live Chat', available between 7am-11pm daily, where you can exchange real-time direct messages with online operators. Please always use 999 for an emergency.

Anonymous reporting: CrimeStoppers is a charity independent of the police, who will take information from you 100% anonymously and pass to the police on your behalf. There is some information that CrimeStoppers cannot process, such as if you are reporting an emergency or you are a victim of crime. Read more on their website [www.crimestoppers-uk.org/](http://www.crimestoppers-uk.org/) or call 0800 555 111 to report. Fearless is the youth brand of CrimeStoppers, which also allows for anonymous reporting and access to information and advice regarding crime and criminality. Visit Fearless on [www.fearless.org/](http://www.fearless.org/).

what3words: This is an app and website used to help identify locations. Every 3m square has 3 unique words associated with it, which you can communicate to an emergency service or other agency to really help pinpoint your location.

## Engagement Opportunities

As soon as is safe to do so, opportunities to speak with your local police in person will recommence, such as Coffee With Cops and pop-up events. We will continue to hold Facebook Q+A sessions, with the next one for Epping and Thornwood scheduled for the 15th April at 12pm. In the meantime, please don't hesitate to get in touch:

[eppingcommunitypolicingteam@essex.police.uk](mailto:eppingcommunitypolicingteam@essex.police.uk)

We are looking to recruit new members for the Brentwood and Epping Forest Independent Advisory Group. The IAG works to harbour knowledge and opinion from diverse communities, gaining insight and constructive feedback on a variety of policing issues. Essex Police look to respond to this wherever possible and appropriate, so as to improve the service for all communities and increase public confidence. If you feel able to constructively challenge the police and/or lacking a platform to have dialogue with them, this could be for you. Visit: [www.essex.police.uk/iag](http://www.essex.police.uk/iag).

